



## Foundation Stage One

Teacher – Ms. Pitman  
(formerly Mrs. Khalil)

I would like to wish our new and old families a warm welcome. I look forward to working with you and your children this year!

Our Class Page  
[Foundation Stage 1](#)  
(Nursery)

## Nursery Newsletter Advent Term 2023



Interactive - [Please click links within this document for further guidance, support, and school website links.](#)

## Communication

We use [Class Dojo](#) to share weekly messages with parents and there is the option for parents and teaching staff to send private messages. If you need to contact the school urgently please phone the office. If your child is unable to attend Nursery please ensure you let the office know and send me a message via Class Dojo.

Our [school website](#) contains lots of useful information, please spare some time to explore the website and become familiar with it.

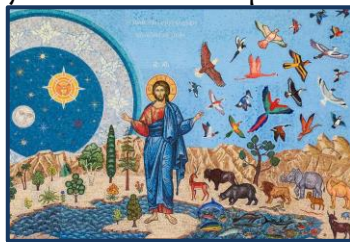
### RE - To Know You More Clearly Branch 1: Creation and Covenant:

In this branch, the children will be introduced to the Creation Story, and learn how prayer helps us become closer to God. We will introduce the children to our Prayer Area and learn how to make the [sign of the cross and say our prayers](#). The children will learn how God wants us to love and care for the world and that this is one way in which we show care for each other.

#### Key Knowledge/Objectives

\* God made me \* God made my family \* I am part of God's family \* God made the world and everything in it \* Care for all of God's creations.

Our RE topic links closely with our main topic for this half term 'This is me'.



### Communication and Language

During this first half term, we get to know the children as we encourage them to tell us about their experiences, their families and their interests. We provide a language-rich environment, commenting on what children are doing, and echoing back what they say with new vocabulary added. Through conversation, storytelling, singing, circle times and role play, children will have the opportunity to hear and use a range of vocabulary.

### Personal, Social and Emotional Development

Starting Nursery is a huge step in your child's learning journey. It starts with a warm friendly welcome and help to 'find their feet', to feel secure and sow positive seeds for their future learning experiences. Our focus is to get to know each other and learn how to take care of ourselves, each other and our classroom. The children will learn about our expectations for behaviour whilst in school. The children will also learn more about themselves and their similarities and differences with others. We will start to discuss our feelings and begin to share and take turns with the resources.

### Physical Development

Discovering how to use their bodies independently and with increasing control, is an amazing part of your child's development. We will provide opportunities both inside and outside of the classroom for the children to develop their core strength, stability, balance, special awareness, coordination and agility. Our PE sessions, dance activities and outdoor area will support children in developing their gross motor skills. Fine motor control will be supported with mark-making opportunities, scissors, tools, pegs, tweezers, crafts and a daily 'Dough Disco' to name a few!

### Literacy and Mathematics

The children will have lots of opportunities to hear and discuss stories as they explore the characters and plot further through small world play provision. We will share songs and rhymes and support children in recognising and then writing their own name. We will have Mathematics sessions across the week as well as challenges in provision for the children to investigate. The children will be touch counting, exploring shape and comparing the size, weight and capacity of objects.

### Understanding the World, Expressive Arts and Design

This half term the children will be learning more about themselves and one another as we start with our 'This is Me' topic. They will paint their faces, draw their families and talk about similarities and differences. They will explore aspects of God's world through autumnal walks around the school grounds and will begin to understand how they can help to care for the world around them.



# Parental Support

## Independence

Ensure your child is starting to dress and undress by themselves, put on their own coat and shoes. Tidy up after themselves - the children are expected to tidy, sweep and take care of our environment at school - encourage this at home.

## Communication and Language:

[Please click this link and read the following to find out more.](#)

## Develop a love of reading and sing nursery rhymes:

Stories before bedtime, sharing your child's reading books on a regular basis - embed this into your daily routines.

[Oxford Owl](#)

# Important Information

## Weather, Clothing and Outdoor Learning

A large part of our learning happens outdoors, ensure that your child has a coat every day.

**Even if the sun is shining!**

The children need to be dressed according to the weather, hats, gloves, scarfs etc.

**If the sun does shine...**  
Sun hats to be in school every day. Sunscreen to be applied before school - if your child attends full-time you might want to buy a 24-hour sunscreen to ensure that your child is protected throughout the day.



Regularly check your child's clothing and write over any fading names.

## Book Bags

We recommend that your child has a named Holy Cross book bag. These types of bags protect the books inside and save the need for a larger bulky bag.

## Water Bottle

Please provide your child with a clearly named water bottle each day.

Please do not put your child's water bottle inside this bag.

We also recommend one keyring, to easily identify your child's bag.

## Change of Clothing

Your child needs to have a small bag that will remain in school with a full change of clothes.

## School Uniform

[Information can be found here.](#) All uniform orders now online.

[Price & Buckland](#) (for items with school logo)

**Helpful Tip**

Buy some [printed name labels](#) to stick onto clothing - use the **family surname**, and then you can use them for all of your children's clothing,

## Dates for your diary...

*\*This list is not conclusive - please continue to check the [school website](#), [Class Dojo](#) and read school text messages.*

## September

4<sup>th</sup> and 5<sup>th</sup> School closed

6<sup>th</sup> School Opens

22<sup>nd</sup> Non-Uniform Day - in **exchange** for a CHOCOLATE donation for our Christmas Fayre Stall

29<sup>th</sup> [Macmillan](#) Coffee Afternoon 2.30 pm

## October

3<sup>rd</sup> Photographer in school - Individual photographs

4<sup>th</sup> [St Francis of Assisi](#) - Eco Warriors Day

6<sup>th</sup> Harvest Festival (donations to be sent in before)

10<sup>th</sup> [World Mental Health Day](#) 'Mental health is a universal human right' [Please visit our website for more information](#)

13<sup>th</sup> Non-Uniform day - in **exchange** for a BOTTLE donation for our Christmas Fayre Stall

16<sup>th</sup> and 18<sup>th</sup> Termly Learning Meetings (Parents evening)

17<sup>th</sup> Flu Immunisations Reception - Y6

20<sup>th</sup> Autumn Fair - 2pm

20<sup>th</sup> October to 6<sup>th</sup> November Half-Term School Closed

## Things to do at home with your child:

Read a story with your child at least 4 times a week- preferably every night before bedtime.

## [Numbots](#)

You will get login details for this.

Singing - please sing nursery rhymes with your child - [Click me](#)

Class Dojo - I might sometimes post additional activities or share activities to do at home

Please see our Class page for more click ['useful links'](#)

	footwear, coats, hats, water bottles etc.		
--	--	--	--

## Useful School Website Links

[FS1 ADMISSIONS](#)

[SCHOOL DAY](#)

[MEALS](#)

[PAYMENTS AND COMMUNICATION](#)

### Finally - but most importantly...

Your child's happiness is our number one priority. If you have any questions regarding your child's development, learning, well-being, or concerns or worries, please do not hesitate to ask. You can message me via Class Dojo, I am happy to give you a call or meet with you.

If you or your child experience any changes to your personal circumstances, for example moving house, separation, or death, anything that may impact your child's well-being or your well-being, please let me know. I will do whatever I can to help.

It is important we are aware of home circumstances to enable us to ensure your child receives further support in school, if necessary.

Thank you for your support.

Ms. Pitman

*Nursery Teacher*