



Real Life Super Heroes

History

Nurses and Hospitals

This half-term we will be finding the answers to the questions:
 Who was Florence Nightingale?
 What made Florence Nightingale special?
 Why do we remember Florence Nightingale?



Maths

This term we will continue to consolidate our knowledge of place value within 20 and move on to within 50.

We will continue to learn addition and subtraction within 20.

The children will have the opportunity to build competency by taking this approach:

Concrete – children should have the opportunity to use concrete objects and manipulatives to help them understand what they are doing.

Pictorial – alongside this children should use pictorial representations. These representations can then be used to help reason and solve problems.

Abstract – both concrete and pictorial representations should support children’s understanding of abstract methods.

English

This half term the children will continue English, phonics and handwriting lessons. Our English lessons will link to our History topic - Florence Nightingale and our Science topic – Senses



Come and See (RE)

Our first topic is ‘**Special People**’. The children will explore who the special people in their lives are. They will then learn about the parish family and some of the special jobs they do. Then they will learn about Jesus being a special member of the parish family.

Our second topic is called ‘**Meals**’. The children will explore the experience of sharing special meals.

The will learn about the story of The Last Supper and what happens during Communion at Mass.



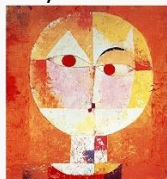
[Knowledge Organisers](#)

Science

Please see [Knowledge Organisers](#) for more information.

Art

This half term the children will have the opportunity to find out about the artist **Paul Klee**, and will create their own pictures of Florence Nightingale in the style of Paul Klee.



Forest School with Mrs Hudson

What is Forest Schools?

Forest School is a holistic sensory approach to learning. It is fully inclusive, it aids with neurological development, it gets children ignited, inspired and motivated, it promotes positive relationships between everyone involved, and it encourages problem solving and creativity through observing and engaging with the environment all year round.

Wellies

Dates for wellies to be in school will be confirmed via Class Dojo



PSHE

Some lessons will be with Mrs Shelton

Children’s Right Weeks

Being Healthy

Mental Health week

Internet Safety

Physical Education

Gymnastics

Floor & Apparatus Develop balance, agility & coordination.

Dates for PE kit to be worn will be confirmed via Class Dojo

Music

We will use **Charanga** website to support music lessons.

Scott Joplin: We will find out about the African-American composer and pianist.


Thank you for your support



Lent 1 2023

Curriculum Newsletter

Class 1

<p>ICT</p> <p>The children will continue learn how to switch on, login and open various programmes on the school laptops and develop their keyboard skills. We will also use iPads to support the teaching of phonics and maths</p> <p>Creating Media – using digital paint program to create pictures.</p> <p>Term 2: Independence Term! We will be focusing on becoming even more independent in Class 1.</p> <p>This will include: Being prepared and ready to learn. Keeping our trays and belongings tidy. Becoming more confident at solving problems ourselves.</p>	<p>Homework</p> <p>Reading</p> <p>Please listen to your child read every day – if possible. Read stories to your child. Class reading books will be changed every Wednesday.</p> <p>Library – Has your child enrolled with the library?</p> <p>Spellings – to be sent home</p> <p>Knowledge Organisers RE, History and Science the school webpage link with be shared via Class Dojo.</p> <p>Spelling Shed Please support your child to login regularly and complete assignments.</p> <p>NUMBOTS https://play.numbots.com/?#/account/school-login/33821</p>	<p>Please Support your child further by...</p> <p> Being on time for school. This is very important, learning starts promptly at 8.45am – your child needs a few minutes to take off their coat, wash hands and get settled. It is not a good start to your child's day if they are late for school.</p> <p>READING – Please read with your child at home on a regular basis. I do understand how busy 'life' can get – but please try and prioritise reading.</p> <p>Communication Please take a couple of minutes each day to check that you are up-to-date with school text messages, class dojo and other important information that might have been shared.</p>	<p>Communication</p> <p>Please contact myself, Mr Hammond first if you have any questions or concerns. Please continue to use Class Dojo to contact me directly, I will respond as soon as possible. If the issue needs to be addressed urgently then please email or telephone the School Office directly.</p> <p>PE on Tuesdays The children will continue to come to school wearing PE kits on PE days. Dates to be confirmed via Class Dojo</p> <p>Changing Reading Books: Every Wednesday Children should keep school reading books and class library book in their reading bags and only bring to school each Friday. We will use books in class to hear the children read in class.</p> <p>School Uniform Please ensure your child is wearing the correct school uniform and appropriate foot wear. All items that belong to your child must be clearly labelled and the children need know where to look for this. Including water bottles.</p> <p>Water Bottles All children need their own water bottle in school every day.</p>
---	---	--	---

Thank you for your support